



## MS320/MS420 Series

Reliability. Security. Productivity.



MS421dn



## Lexmark MS320/MS420 Series

Strike the perfect balance of performance and affordability in small-workgroup mono printing with standard two-sided output, enhanced security and built-in durability. The Lexmark MS320/420 Series' multi-core processor supports output at up to 42 pages per minute\* (38 pages per minute\* for MS321dn), while long-lasting printing components reduce downtime.



### Get more done

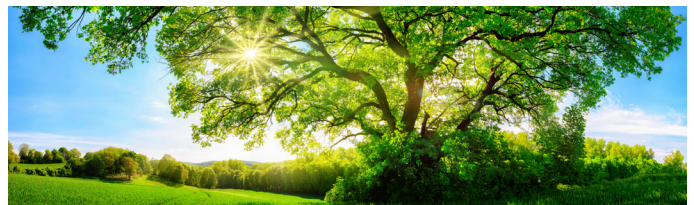
- ▶ Tackle your printing workload with the power of a 1-GHz dual-core processor and 512 MB of memory.
- ▶ Get up to 42-page-per-minute printing (MS421dn) or 38-page-per-minute printing (MS321dn).
- ▶ Two-line LCD lets you configure, interact and monitor vital system information.
- ▶ Use media sizes from A6 to legal in the paper tray, plus smaller media and envelopes in the 100-sheet multipurpose feeder.

### Ready when you are

- ▶ Long-life fuser and imaging components extend uptime.
- ▶ Unison™ Toner replacement cartridges deliver up to 20,000 pages\*\* of high-quality printing.
- ▶ Maximum input capacity of 900 pages means fewer interruptions.
- ▶ Durable metal frame is designed for longevity.

### Robust, built-in security

- ▶ Lexmark's full-spectrum security architecture helps keep your information safe—on the document, the device, over the network, and everywhere in between.
- ▶ A range of embedded features harden device against attacks.
- ▶ Standard Confidential Print feature (on MS421dn) helps ensure output security via simple PIN.
- ▶ Keypoint Intelligence - Buyers Lab honored Lexmark with a prestigious BLI PaceSetter award for Document Imaging Security\*\*\*.



### Built for planet earth

- ▶ Energy management features reduce power consumption in active use or sleep mode.
- ▶ Standard two-sided printing saves paper.
- ▶ Use of post-consumer recycled content in manufacturing saves natural resources.
- ▶ Device is rated EPEAT® Silver and ENERGY STAR® certified.
- ▶ Recycle cartridges through the award-winning Lexmark Cartridge Collection Program (LCCP).

\*Print and copy speeds measured in accordance with ISO/IEC 24734 and ISO/IEC 24735 respectively (ESAT). For more information see: [www.lexmark.com/ISOspeeds](http://www.lexmark.com/ISOspeeds).

\*\*Average standard page yield value declared in accordance with ISO/IEC 19752.

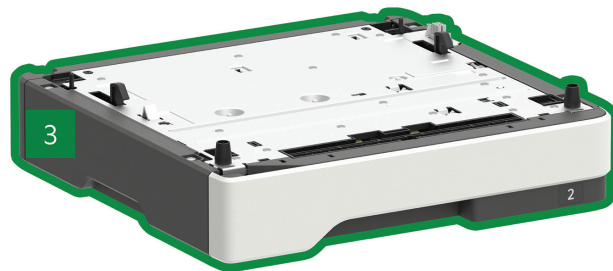
\*\*\*Award based on North America data.

# Lexmark MS320/MS420 Series



- 1 Printer with 2-line display  
10.2 x 15.7 x 14.7 inches  
260 x 399 x 374 mm
- 2 550-sheet tray  
5 x 15.7 x 14.7 inches  
126 x 389 x 374 mm

or



- 3 250-sheet tray  
3.7 x 15.7 x 14.7 inches  
95 x 389 x 374 mm

Standard

Optional

Supports one optional tray.

© 2018 Lexmark. All rights reserved.

Lexmark, the Lexmark logo and Unison are trademarks of Lexmark International, Inc., registered in the United States and/or other countries. AirPrint and the AirPrint Logo are trademarks of Apple, Inc. ENERGY STAR® is a U.S. registered mark. EPEAT® is a trademark of EPEAT, Inc. in the United States and other countries. Google Cloud Print is a trademark of Google, Inc. MOPRIA®, the Mopria® Logo™ and the Mopria® Alliance logos are trademarks, service marks, and certification marks of Mopria Alliance, Inc. in the United States and other countries. All other trademarks are the property of their respective owners.

This product includes software developed by the OpenSSL Project for use in the Open SSL Toolkit ([http:// www.openssl.org/](http://www.openssl.org/)).

| Product specifications                               | Lexmark MS321dn   | Lexmark MS421dn   | Lexmark MS421dw   |
|--|---|---|---|
| Printing   |   |   |   |
| Display  | 2-line 128 x 32 pixel All Points Addressable (APA) monochrome OLED display  |   |   |
| Print Speed: Up to <sup>6</sup>                      | Black: 38 ppm   | Black: 42 ppm   |   |
| Time to First Page: As fast as                       | Black: 6.5 seconds  | Black: 6.25 seconds   |   |
| Print Resolution                                     | Black: 1200 IQ (1200 x 600 dpi), 1200 x 1200 dpi, 2400 IQ (2400 x 600 dpi), 300 x 300 dpi, 600 x 600 dpi  |   |   |
| Memory   | Standard: 512 MB / Maximum: 512 MB  |   |   |
| Hard Disk  | Not Available   |   |   |
| Recommended Monthly Page Volume <sup>2</sup>         | 500 - 6000 pages  | 1000 - 10000 pages  |   |
| Maximum Monthly Duty Cycle: Up to <sup>3</sup>       | 50000 pages per month   | 100000 pages per month  |   |
| Supplies <sup>7</sup>                                |   |   |   |
| Laser Cartridge Yields (up to) <sup>1</sup>          | 6,000-page Cartridge, 15,000-page High Yield Cartridge  | 6,000-page Cartridge, 15,000-page High Yield Cartridge, 20,000-page Extra High Yield Cartridge  |   |
| Imaging Unit Estimated Yield: Up to                  | 60000 pages, based on 3 average letter/A4-size pages per print job and ~ 5% coverage  |   |   |
| Cartridge(s) Shipping with Product <sup>1</sup>      | 2,000-page Return Program Toner Cartridge   | 3,000-page Return Program Toner Cartridge   |   |
| Paper Handling                                       |   |   |   |
| Included Paper Handling                              | 250-Sheet Input, 100-Sheet Multipurpose Feeder, 150-Sheet Output Bin, Integrated Duplex   |   |   |
| Optional Paper Handling                              | 250-Sheet Tray, 550-Sheet Tray, 550-Sheet Lockable Tray   |   |   |
| Paper Input Capacity: Up to                          | Standard: 350 pages 20 lb or 75 gsm bond / Maximum: 900 pages 20 lb or 75 gsm bond  |   |   |
| Paper Output Capacity: Up to                         | Standard: 150 pages 20 lb or 75 gsm bond / Maximum: 150 pages 20 lb or 75 gsm bond  |   |   |
| Media Types Supported                                | Card Stock, Envelopes, Paper Labels, Plain Paper, Transparencies, Refer to the Paper & Specialty Media Guide  |   |   |
| Media Sizes Supported                                | 10 Envelope, 7 3/4 Envelope, 9 Envelope, A4, A5, B5 Envelope, C5 Envelope, DL Envelope, Executive, Folio, JIS-B5, Legal, Letter, Statement, Universal, Oficio, A6 | 10 Envelope, 7 3/4 Envelope, 9 Envelope, A4, A5, DL Envelope, Executive, Folio, JIS-B5, Legal, Letter, Statement, Universal, Oficio, A6 |   |
| General Information <sup>4</sup>                     |   |   |   |
| Standard Ports                                       | USB 2.0 Specification Hi-Speed Certified (Type B), Gigabit Ethernet (10/100/1000)   |   | USB 2.0 Specification Hi-Speed Certified (Type B), Gigabit Ethernet (10/100/1000), 802.11b/g/n Wireless |
| Noise Level: Operating                               | Print: 54 dBA   | Print: 55 dBA   |   |
| Specified Operating Environment                      | Humidity: 8 to 80% Relative Humidity, Temperature: 10 to 32°C (50 to 90°F), Altitude: 0 - 5000 Meters (16,404 Feet)   | Temperature: 16 to 32°C (60 to 90°F), Humidity: 8 to 80% Relative Humidity, Altitude: 0 - 5000 Meters (16,404 Feet)                     |   |
| Limited Warranty - See Statement of Limited Warranty | 1-Year Advanced Exchange, Next Business Day   |   |   |
| Size (in. - H x W x D) / Weight (lb.)                | 10.2 x 15.7 x 14.7 in. / 30.6 lb.   | 10.2 x 15.7 x 14.7 in. / 30.9 lb.   |   |

All information in this brochure is subject to change without notice. Lexmark is not liable for any errors or omissions.

<sup>1</sup>Average standard page yield value declared in accordance with ISO/IEC 19752. <sup>2</sup>"Recommended Monthly Page Volume" is a range of pages that helps customers evaluate Lexmark's product offerings based on the average number of pages customers plan to print on the device each month. Lexmark recommends that the number of pages per month be within the stated range for optimum device performance, based on factors including: supplies replacement intervals, paper loading intervals, speed, and typical customer usage. <sup>3</sup>"Maximum Monthly Duty Cycle" is defined as the maximum number of pages a device could deliver in a month using a multishift operation. This metric provides a comparison of robustness in relation to other Lexmark printers and MFPs. <sup>4</sup>Printers are sold subject to certain license/agreement conditions. See [www.lexmark.com/printerlicense](http://www.lexmark.com/printerlicense) for details. <sup>5</sup>Actual Yield may vary based on other factors such as device speed, paper size and feed orientation, toner coverage, tray source, percentage of black-only printing and average print job complexity. <sup>6</sup>Print and copy speeds measured in accordance with ISO/IEC 24734 and ISO/IEC 24735 respectively (ESAT). For more information see: [www.lexmark.com/ISOspeeds](http://www.lexmark.com/ISOspeeds). <sup>7</sup>Product functions only with replacement cartridges designed for use in a specific geographical region. See [www.lexmark.com/regions](http://www.lexmark.com/regions) for more details.